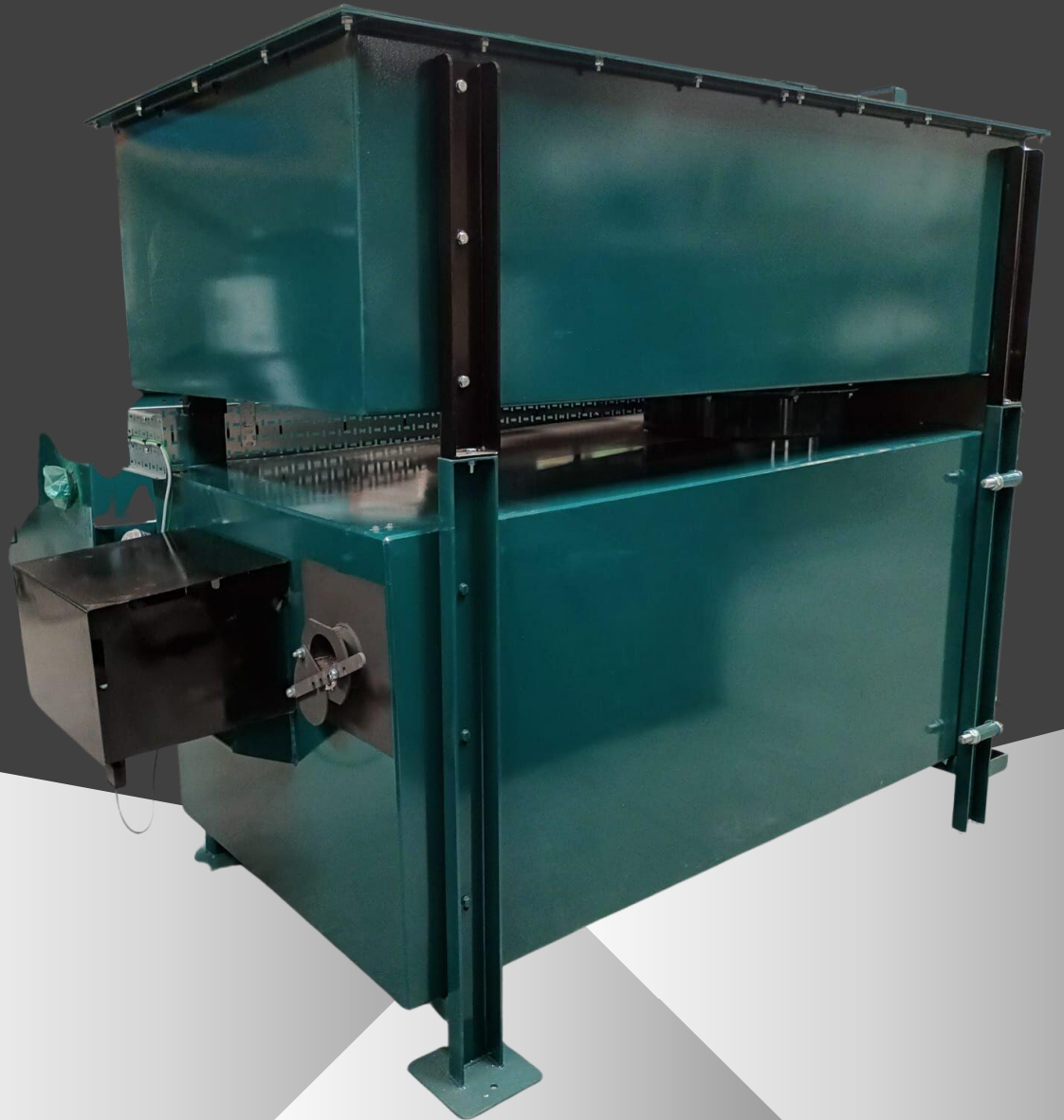


AIS 041 CYCLONE

PRODUCT DETAILS

PRODUCT DETAILS | FEATURES | SPECIFICATIONS |
WARRANTY INFORMATION

C. (217) 335-4558
M. (+44) 7772 736082
E. info@agriincinerators.com
W. www.agriincinerationsystems.com





One of the key reasons our incinerators are recognized as being *'probably the best'* on the world market is the use of our market leading and trusted low thermal mass monolithic concrete lining which is used in all of our models.

All models in the Cyclone Range are supplied with an integral secondary chamber, ensuring they fully conform to many legislative bodies around the world.

AIS 041 Cyclone

- The AIS 041 Cyclone is the larger of our two front loading models and is Ideal for the bio secure disposal of carcasses within the agricultural farming industry, particularly suited for small to medium farming operations including; Piglets up to Sows, Poultry, Sheep, Game Farms.
- Access to the main chamber is via a large loading door located on the front of the machine.
- PLC timer controls with automatic burner shut off function and fast ignition burners. One temperature-controlled burner in the main chamber and one in the secondary chamber.
- Burns up to *50kgs/110 lbs per hour and has a load capacity of up to 290kg / 639 lbs.
- Can be loaded whilst in operation maximizing the inherent thermal efficiency of our trusted monolithic concrete lining, keeping running costs low.
- Optional Extra features include; Animal Loading Trolley / Winch assembly / USB Data Logger / Stack Extensions / Ash Rake / Simple Heat Exchange system / Control Panel screen size increase / Service Kits .

* Burn Rate may be subject to your local regulations. Speak to a member of our team for more information.



Image shown is of the AIS 041 Cyclone



"Our mission is to build the most robust, fuel-efficient, cost-effective solution for the disposal of animal and animal by product waste and to continue to be the brand that is known world-wide for both quality of product and quality of customer service".

Speak to a member of AIS today.

Call us on: (217) 335-4558

Email us : info@agriincinerators.com

Visit us: www.agriincinerationsystems.com



Be Assured of a Quality Product & Quality Service with AIS:

- Each machine is hand crafted by our team of skilled technicians in the UK and U.S.
- The reason your incinerator will last is due to the type of lining used. Our trusted monolithic casting system ensures maximum strength, reliability and a longer machine life. We are always happy to explain why our technology is far better than any other manufacturers product on the world market. Talk to us to find out more and make your own mind up.
- Behind the AIS brand is a team of experts who are always on hand to discuss any questions that you may have about incineration, so you can be assured of great service and a great product.
- But it goes beyond that, we stay with you for the life of the machine, always on hand if or when you need us. It's a people thing, it's an AIS thing.

*3 YEAR WARRANTY AS STANDARD :

The whole plant and associated equipment supplied as part of the overall installation will be covered by a *36-month or 2100 hours warranty (whichever soonest) from the date of dispatch from the manufacturing premises of Agri Incineration Systems Limited, except for any consumable item as listed below and provided that:

- a) Each defect has materialized under normal operating conditions and not due to misuse, abuse, or operational errors.
- b) An effective maintenance regime is operated which may include a Service Contract being taken up at the time of handover. This Service Contract should be provided by Agri Incineration Systems Limited or trained and authorized agents.
- c) The contract price, as detailed within the quotation or as amended by agreement of both parties, has been paid in full.

Consumable Parts (Items not covered under Warranty).

1. Primary Chamber Thermocouples
2. Secondary Chamber Thermocouples
3. Access Door seals
4. Control Panel indicator bulbs or LEDs
5. Burner electrodes and leads
6. Burner probes and leads
7. Burner Blast Tubes
8. Burner Diffuser Assemblies
9. Burner nozzles / ionization probes
10. Grate Bars
11. Mechanical damage of any sort

3 Year Warranty as standard, talk to us about a long-term Service Plan to suit you



Specifications	Unit - Metric		Unit - Imperial	
*Burn Rate	Up to kg/hr	50	Up to lbs/hr	110
Front / Top Load		Front		Front
Operational Dimensions Static (LxWxH)	m	2.4 x 1.6 x 3.1	feet/inch	7' 10" x 5' 3" x 10' 4"
External Height Static	mm *inc. Stack	3140	feet/inch *inc. Stack	10' 4"
External Height Static	mm *ex. Stack	1900	feet/inch *ex. Stack	6' 3"
Weight Static	Tonne *estimated	2.6	lbs *estimated	5733
Load Height from Ground (floor to bottom edge)	mm	300	feet/inch	1'
*Fuel Consumption Diesel	LPH *est during main burn	6.8– 10.4	GPH *est during main burn	1.8 – 2.7
*Fuel Consumption LPG	LPH *est during main burn	9– 15		1.7 – 4.1
*Fuel Consumption Nat Gas	m³/h *est during main burn	7– 10	ft³/h *est during main burn	240 – 366
Grate Bars		No		No
Load Door Opening (Width x Height/Depth)	mm *area	900 x 700	ft/inch *area	2' 11" x 2' 4"
Chamber Size (LxWxH)	m	1.9 x 0.9 x 0.7	ft/inch	6' 1" x 2' 11" x 2' 4"
Chamber Actual Volume	m³	1.20	ft³	42
Chamber Load Volume	m³	0.52	ft³	18
*Chamber Load Capacity	kg	290	lbs	639
Std Stack Diameter	inch/mm *2D Size	10"	inch/mm *2D Size	10"
No. Main Burners		1		1
No. Secondary Burners		1		1
Burner Output	kW *heat	150	Btu *heat	511,821
Electric Consumption	kW *electricity	0.25	kW *electricity	0.25

*The optimum performance of the incinerator is dependent upon efficient usage and waste type

"Our mission is to build the most robust, fuel-efficient, cost-effective solution for the disposal of animal and animal by product waste and to continue to be the brand that is known world-wide for both quality of product and quality of customer service".

Speak to a member of AIS today.

Call us on: (217) 335-4558

Email us : info@agriincinerators.com

Visit us: www.agriincinerationsystems.com